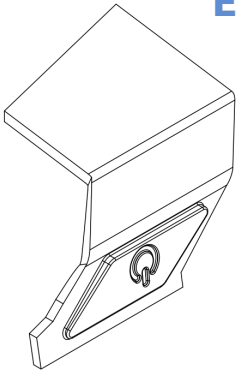


# E10W Installation Manual

Rubber power button for Garmin Edge 1000



Thanks for your purchase.

NOTE: We recommend using T8000 glue over epoxy, cyanocrilate (superglue), modeling glue, or others.



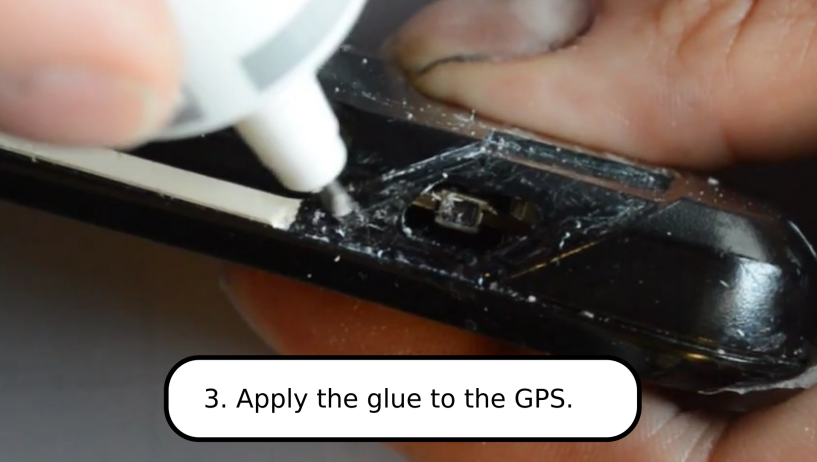
Video available at:  
<https://youtu.be/hvY326kkTdA>

1. You will need: IPA, scalpel, glue, tweezers (optional), cello tape (optional)





2. Cut the old rubber where the new button will be placed using the scalpel. Remove the last bits with alcohol.



3. Apply the glue to the GPS.



4. Place the new button in the GPS, and hold it in place using the cling film.



5. If you have a silicone sleeve, put it on to apply more pressure.



6. After 24 hours, remove the cling film and the excess glue with a tissue soaked in alcohol.